

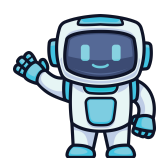


Artificial Intelligence: Shaping Futures, Impacting Lives

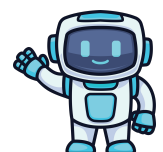
Exhibition Discussion Questions

We invite community members, students, instructors and any other viewers of the *Artificial Intelligence: Shaping Futures, Impacting Lives* exhibition on view in WVU Downtown Library, to use these discussion questions to guide their visit. For questions or to arrange a tour, please contact Sally Brown, lead curator of *Artificial Intelligence* and exhibit coordinator for the WVU Libraries, sally.brown1@mail.wvu.edu, (304) 293-0369.

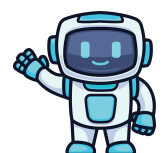
Before viewing the exhibit:



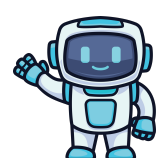
What is AI?



How is AI used/implemented in our everyday lives? In your own?

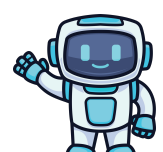


How does the use of AI affect learning?

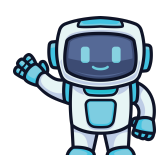


What is the importance of AI literacy?

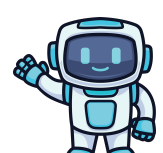
After viewing the exhibit:



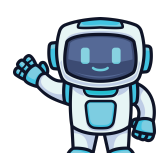
Do the benefits of using AI outweigh the risks/ramifications?



As AI continues to advance, should it become more prominent in various sectors of our lives?



What are the ethical implications of relying on AI in healthcare, education, governance?



What regulations should be placed on AI usage? Should they be nationally or internationally enforced?







Artificial Intelligence: Shaping Futures, Impacting Lives





Exhibition Discussion Questions

We invite community members, students, instructors and any other viewers of the *Artificial Intelligence: Shaping Futures, Impacting Lives* exhibition on view in WVU Downtown Library, to use these discussion questions to guide their visit. For questions or to arrange a tour, please contact Sally Brown, lead curator of *Artificial Intelligence* and exhibit coordinator for the WVU Libraries, sally.brown1@mail.wvu.edu, (304) 293-0369.

Before viewing the exhibit:

-  What is AI?
-  How is AI used/implemented in our everyday lives? In your own?
-  How does the use of AI affect learning?
-  What is the importance of AI literacy?

After viewing the exhibit:

-  Do the benefits of using AI outweigh the risks/ramifications?
-  As AI continues to advance, should it become more prominent in various sectors of our lives?
-  What are the ethical implications of relying on AI in healthcare, education, governance?
-  What regulations should be placed on AI usage? Should they be nationally or internationally enforced?







Artificial Intelligence: Shaping Futures, Impacting Lives





Exhibition Discussion Questions

We invite community members, students, instructors and any other viewers of the *Artificial Intelligence: Shaping Futures, Impacting Lives* exhibition on view in WVU Downtown Library, to use these discussion questions to guide their visit. For questions or to arrange a tour, please contact Sally Brown, lead curator of *Artificial Intelligence* and exhibit coordinator for the WVU Libraries, sally.brown1@mail.wvu.edu, (304) 293-0369.

Before viewing the exhibit:

-  What is AI?
-  How is AI used/implemented in our everyday lives? In your own?
-  How does the use of AI affect learning?
-  What is the importance of AI literacy?

After viewing the exhibit:

-  Do the benefits of using AI outweigh the risks/ramifications?
-  As AI continues to advance, should it become more prominent in various sectors of our lives?
-  What are the ethical implications of relying on AI in healthcare, education, governance?
-  What regulations should be placed on AI usage? Should they be nationally or internationally enforced?